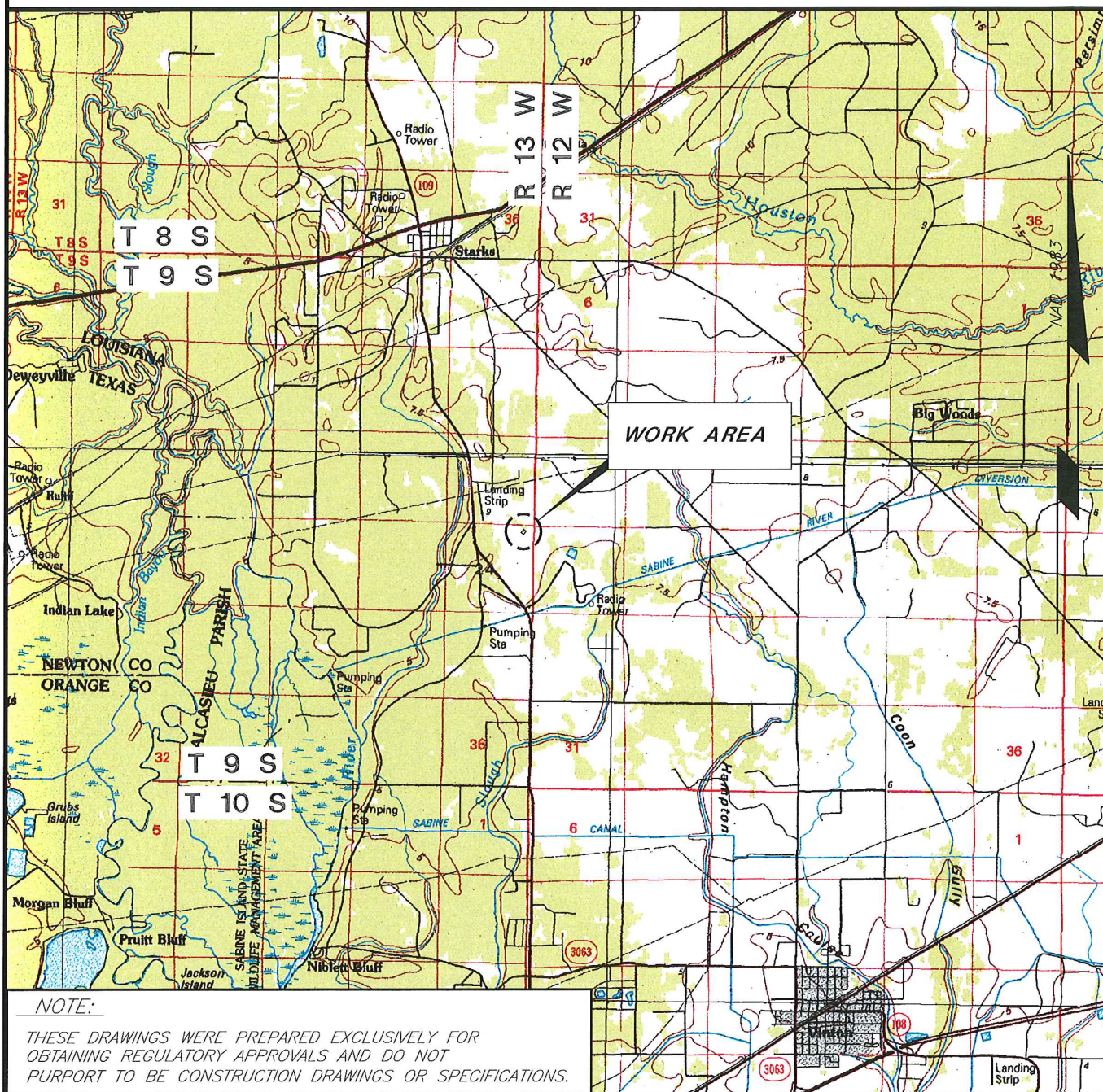
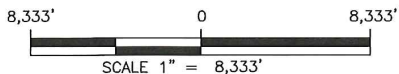


APR 16 2019



VICINITY MAP

REPRODUCED FROM USGS "LAKE CHARLES" LA.
1 : 100,000 QUADRANGLE.



PREPARED BY:
C. L. JACK STELLY & ASSOCIATES, INC.
143 WALL STREET, LAFAYETTE, LA 70506
PH. (337) 237-0746
FILE NO. 15226-11068-C1.DWG

PROPOSED WELL LOCATION

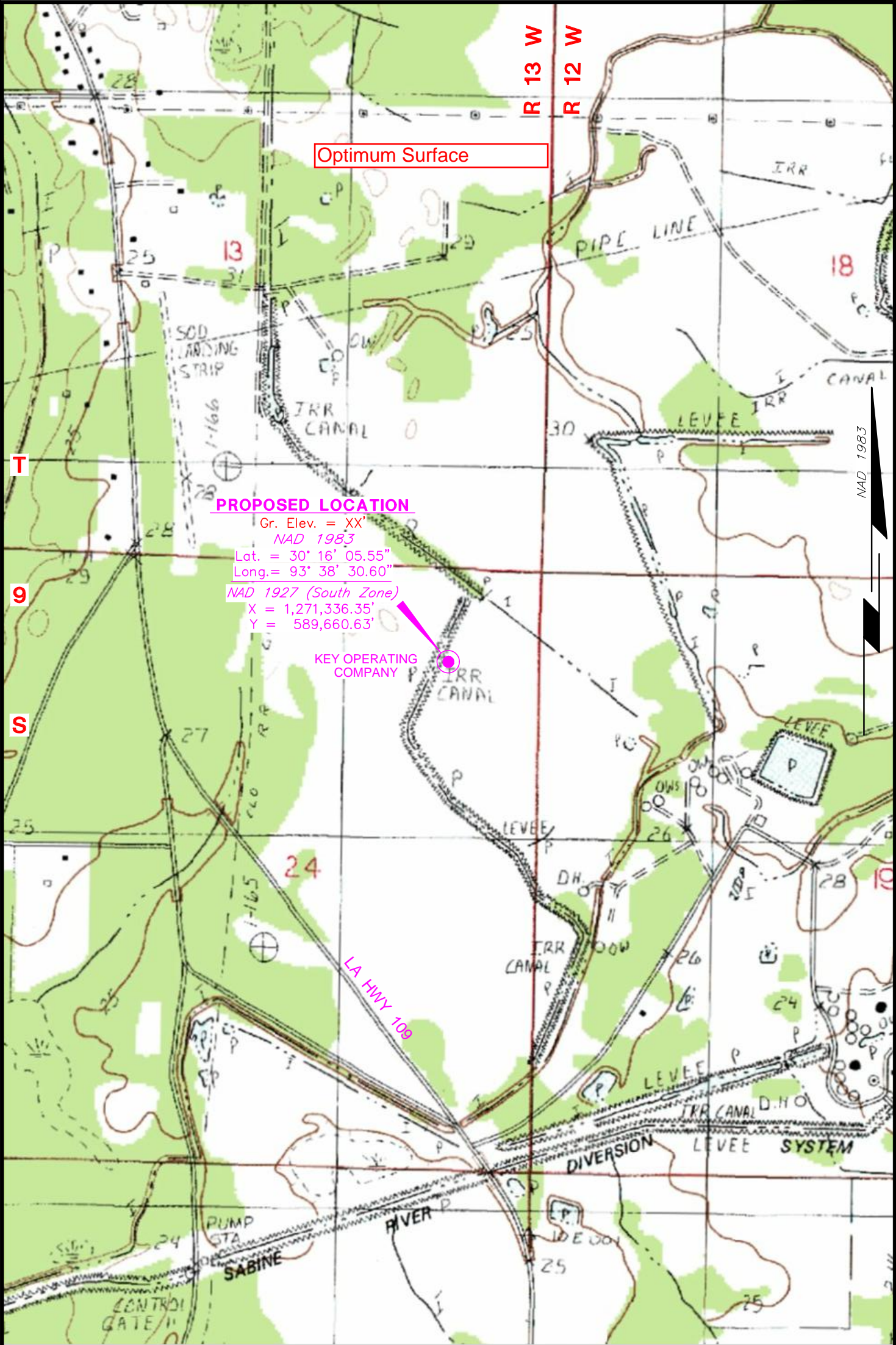
Olympia Minerals No. 1
SEC. 24, T 9 S – R 13 W; STARKS FIELD
CALCASIEU PARISH, LOUISIANA

APPLICATION BY:
MARCH 28, 2019

KEY OPERATING COMPANY
LAFAYETTE, LOUISIANA

REVISIONS:

SHEET 1 OF 3



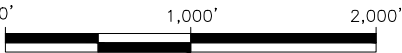
“PRELIMINARY”

Not to be used for construction,
bidding, recordation, conveyance, sales
or as the basis for the issuance of a permit.

KEY OPERATING COMPANY
TOPOGRAPHICAL SKETCH
OLYMPIA MINERALS NO. 1

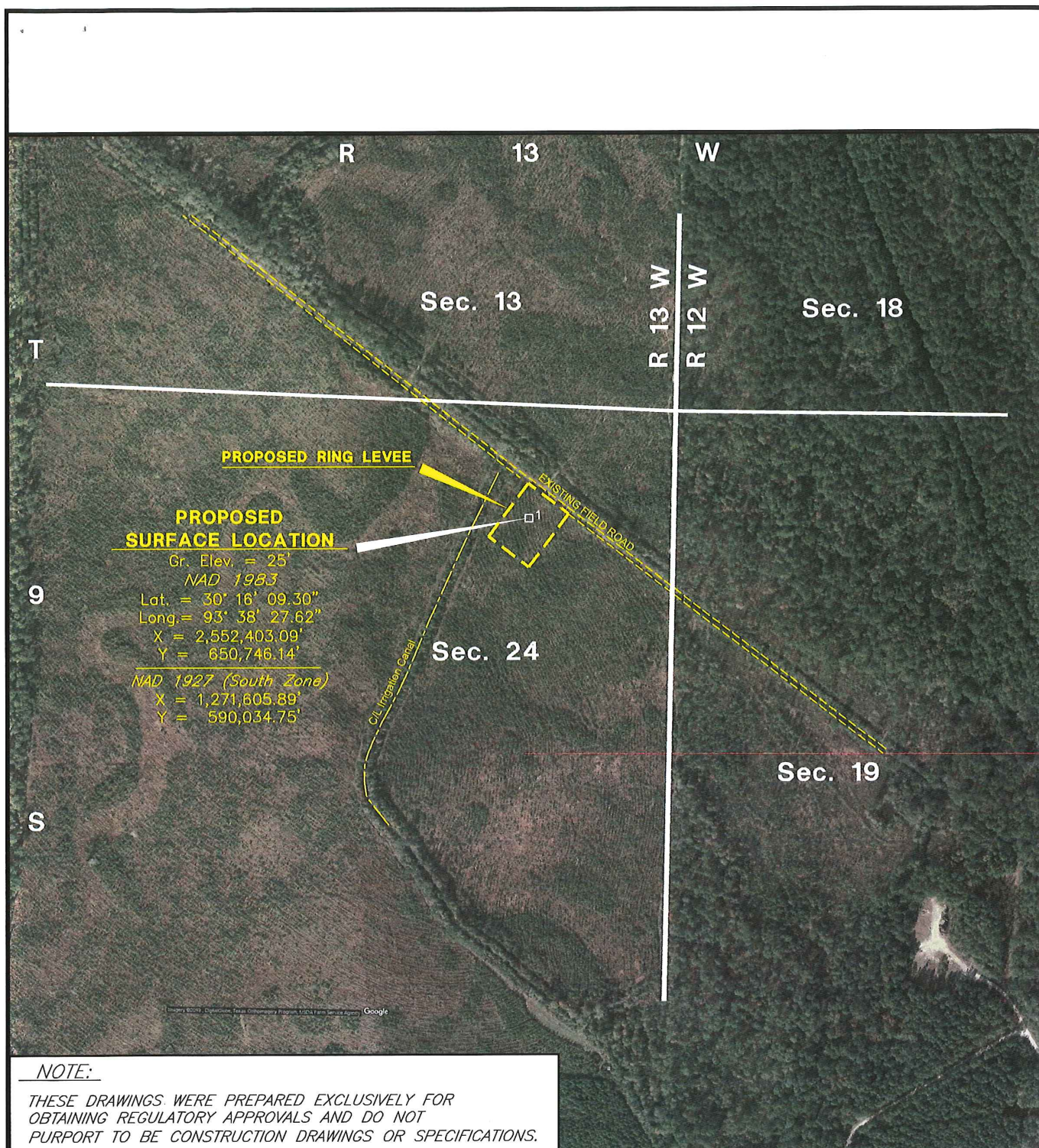
CALCASIEU PARISH, LOUISIANA

PREPARED BY:
C.L. JACK STELLY & ASSOCIATES, INC.
143 WALL STREET, LAFAYETTE, LA 70506
PH. (337) 237-0746
FILE NO. 15226-11068-M15.DWG



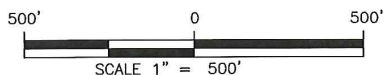
SCALE : 1" = 1,000'

MARCH 21, 2019



LOCATION MAP

REPRODUCED FROM 2019 GOOGLE IMAGERY



PREPARED BY:
C. L. JACK STELLY & ASSOCIATES, INC.
143 WALL STREET, LAFAYETTE, LA 70506
PH. (337) 237-0746
FILE NO. 15226-11068-C1.DWG

PROPOSED WELL LOCATION

Olympia Minerals No. 1

SEC. 24, T 9 S — R 13 W; STARKS FIELD

CALCASIEU PARISH, LOUISIANA

APPLICATION BY:
MARCH 28, 2019

KEY OPERATING COMPANY
LAFAYETTE, LOUISIANA

REVISIONS:

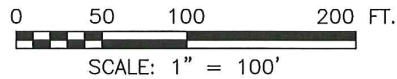
SHEET 2 OF 3

APR 16 2019

NOTE:

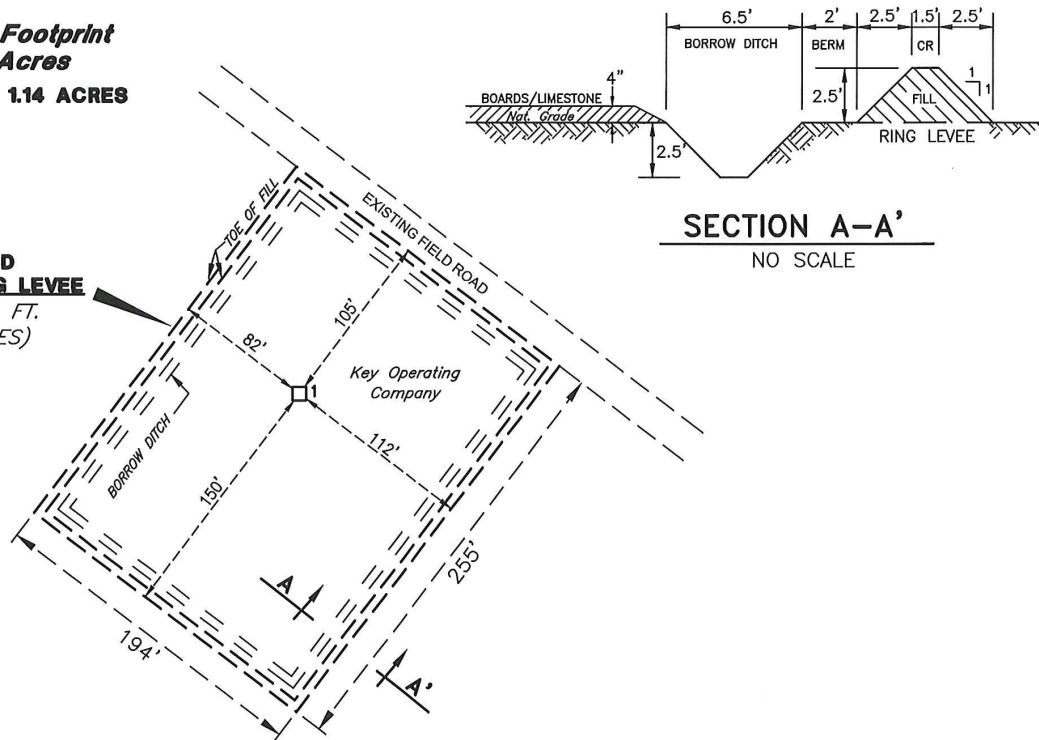
THESE DRAWINGS WERE PREPARED EXCLUSIVELY FOR
OBTAINING REGULATORY APPROVALS AND DO NOT
PURPORT TO BE CONSTRUCTION DRAWINGS OR SPECIFICATIONS.

PLAN

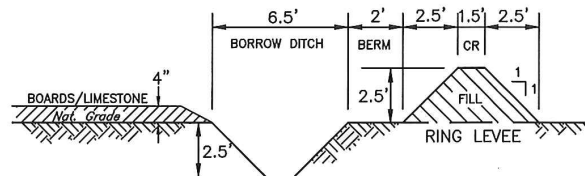


Project Footprint
1.14 Acres
WETLANDS = 1.14 ACRES

PROPOSED
PROPOSED RING LEVEE
49,470 SQ. FT.
(1.14 ACRES)



SECTION A-A'
NO SCALE



NAD 1983

NOTES:

- 1.) Approximately 333 cubic yards of excavation required for proposed ring levee.
- 2.) Boards will be laid on natural ground for drill area.
- 3.) If well is productive, drill area will be permatized with approx. 610 cu. yds. of limestone.
- 4.) A containerized system shall be used for drilling fluids, or cuttings associated with drilling fluids.
- 5.) All produced waters from drilling or production operations shall be held in closed storage tanks until they can be reinjected on site or transported to a state approved reinjection well.
- 6.) All structures built under the authorization and conditions of this permit shall be removed from the site within 120 days of abandonment of the facilities for the herein permitted use, or when these structures fall into a state of disrepair such that they can no longer function as intended. This condition does not preclude the necessity for revising the current permit or obtaining a separate Coastal Use Permit, should one be required, for such removal activities.
- 7.) In order to ensure the safety of all parties, the permittee shall contact the LOUISIANA ONE CALL at (1-800-272-3020) a minimum of 48 hours prior to the commencement of any excavation or demolition activity.

PROPOSED WELL LOCATION

Olympia Minerals No. 1
SEC. 24, T 9 S - R 13 W; STARKS FIELD
CALCASIEU PARISH, LOUISIANA

APPLICATION BY:
MARCH 28, 2019

KEY OPERATING COMPANY
LAFAYETTE, LOUISIANA

PREPARED BY:
C. L. JACK STELLY & ASSOCIATES, INC.
143 WALL STREET, LAFAYETTE, LA 70506
PH. (337) 237-0748
FILE NO. 15226-11068-C1.DWG

SHEET 3 OF 3

